

V-RAD SELECT 1000

Part Number: **25628**



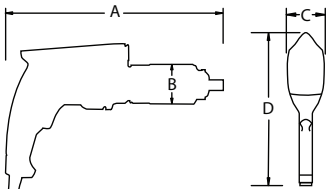
LIGHTER **FASTER** STRONGER

V-RAD Select electric series are a new generation of electric torque wrenches used for the installation or removal of heavy duty fasteners where accuracy, power, and safety are required. Quick adjust torque settings.

SPECIFICATIONS

Torque Ranges: 100 ft. lbs. - 1000 ft. lbs.
 Speed: 8.8 RPM
 Weight: 8.6 lbs.
 Square Drive: 0.75"
 Noise Level: 80 dB
 Repeatability: +/-2
 Accuracy: +/-5%

DIMENSIONS



DIMENSION A	DIMENSION B	DIMENSION C	DIMENSION D
12.0"	2.5"	2.9"	8.0"



Non Impacting



Safe & Reliable



Class 1 Division 2 Group A, B, C, D T4



Accredited ISO/IEC 17025

Included Tool Case

With Reaction Arm & Retaining Ring, Safety Instructions and Operators Manual On Usb Flash Drive.



SUITABLE REACTION ARMS

Standard
PN: 19260



Deep Socket
PN: 13367



Double Ended Arm
PN: 13368



Blank
PN: 13364



Double Ended Blank
PN: 13365



Retaining Ring
PN: 12733



NEW WORLD TECHNOLOGIES INC

#100 - 30722 MARSHALL RD | ABBOTSFORD, BC V2T 0H9 | CANADA
 604.852.0405 | INFO@RADTORQUE.COM | RADTORQUE.COM